

# TECHNIA

ADDNODE GROUP



xCompare

Compare CATIA V5, SMG and JT data to find differences in two revisions of products, parts and drawings or to verify the conversion process.

EXPERIENCE PACKAGED

# Handle Model Modifications

## Save time with comparing models

The model comparison can either be performed in CATIA or in batch mode in order to avoid doing it manually.

## Increase reliability

A manual verification implies the risk of human errors, since changes can be missed in complex models. xCompare ensures that all modifications are found.

## Fulfill legal or company requirements regarding documentation

For data conversion and long term data archival, legal or company internal regulations might require that the generated or archived model data are consistent with the original data of the CAD system. xCompare V5/JT and V5/SMG ensure this verification.

The following comparisons are currently available:

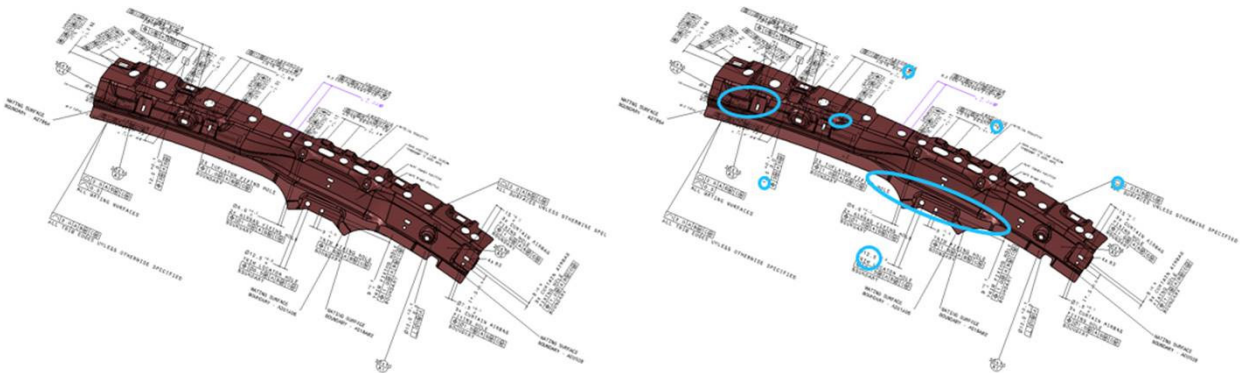
**V5/V5**

**V5/SMG**

**V5/JT**

**JT/JT**

**Compare CATIA V5, SMG and JT data to find differences in two revisions of products, parts and drawings or to verify the conversion process**



## Functionality

- Traceability of all design changes of CAD models
- Supports CATIA V5, JT and SMG
- Support of 3D Master process and long term data archival
- Full integration in CATIA or LiteBox3D
- Model Comparison using the original data without any conversion
- Interactive and batch comparison
- Detailed and flexible reports
- Validate new revisions and model translation in CATIA and JT
- Geometry and feature based model comparison

Read more at [www.technia.com/software/xcompare](http://www.technia.com/software/xcompare)

# TECHNIA

ADDNODE GROUP

## About TECHNIA

At TECHNIA, we pave the way for your innovation, creativity and profitability. We combine industry-leading Product Lifecycle Management (PLM) tools with specialist knowledge, so you can enjoy the journey from product concept to implementation.

Our experience makes it possible to keep things simple, personal and accessible so that together we transform your vision into value.

With over 30 years' experience, more than 6000 customers worldwide and world-class knowledge in PLM & Intelligent Engineering, we work together as true partner and extension of your team to create an exceptional PLM experience.

Our 680 people strong team work from 32 locations around the world, across vertical industries, delivering a premium service with a global infrastructure and a local presence. We adopt the latest technology and agile methodologies so, even as technology changes, our relationships last a lifetime.

Contact: +49 89 218 960 17 | [Martin.Noelle@technia.com](mailto:Martin.Noelle@technia.com)  
[www.technia.com/software/xcompare](http://www.technia.com/software/xcompare)

EXPERIENCE PACKAGED